

1. w

5 | 2. w

6 **A** Gm tr Gm G7(b9)

9 Cm tr Cm/G tr D/F#

11 Gm A/C# D7 tr Gm⁶ tr

14 **B** Gm w D7 w D7 w Gm⁶

18 Gm w G7(b9) w Cm A/C# D7 w

22 w Cm A/C# D7 tr A

25 **C**

27

29

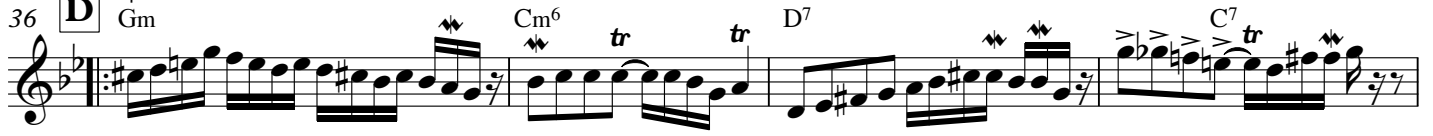
31 1. 2. Bb

34 perc. fills

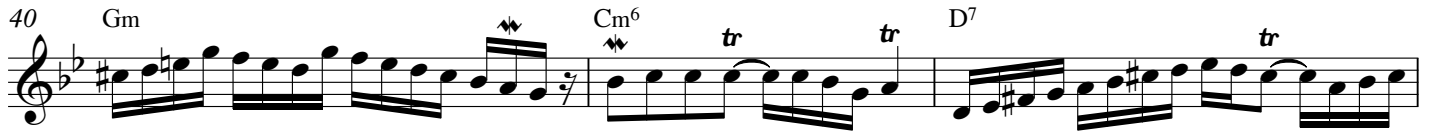
2



36 **D** Gm



40 Gm



43 1. D7

Gm

2. D7

Gm
fine

D.S. al coda **S**

